

Welcome Parents

Parents' Information Day

**Wednesday 13th September
2023**

If the meeting finishes.....

Rejoin using the same link.

Year 6 Team

Assistant Head – Mrs L. Wenborne

Year Group Leader – Mrs F.Rouf

Alder – Mr Lee

Aspen – Mrs F. Rouf

Ash – Mrs L. Pillay

Birch – Mrs Perera

Beech – Mrs F. Robanni

Staff supporting sets:

Mrs A. Ganesh

Mrs N. Prakash

Mrs. N. Mohammed

School Day

8.00

Breakfast Club

8.30-8.45

Gates Open, children can start school between this time. I encourage children to come in at 8:30 if possible.

8.30-8.45

Early Morning Work

8.45

Registration is taken and lessons begin

Our commitment



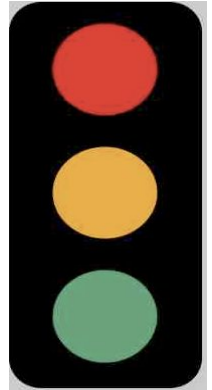
Behaviour

We have high expectations of our children in and outside of school.

- To listen carefully and engage in learning
- To walk sensibly and quietly around the school
- To speak respectfully to each other
- We expect all children to try their best and attempt tasks independently before asking for help
- To always respect school property and others around the school
- Toilets

Behaviour in Class

We have high expectations for behaviour at all times. We currently use a traffic light system that encourages children to make positive choices and demonstrate positive behaviour in class.



- At the start of the day, each child begins on green.
- If a child misbehaves or breaks one of the classroom rules, they receive a verbal warning. If this the behaviour is repeated again, the child is now moved to amber. Another verbal warning is given, reminding them of our values and their conduct in class.
- If the child fails to make a positive choice about their behaviour, they are moved to red. They will then need to visit the reflection room at lunchtime, where a sheet is filled out with the learning mentors who will discuss their behaviour with them and provide support and reflection time.

Our School Values

Children will learn about, discuss and reflect on our school values during assemblies and as part of Learning at Lathom.

The school values are the 'attributes' we want to develop in all children at our school so that they become responsible and caring citizens of the future.



School Uniform

Lathom Junior School has a school uniform for both the classroom and PE. All children are expected to wear school uniform to school each day. All items of clothing should be labelled with your child's name.

Girls School Uniform:

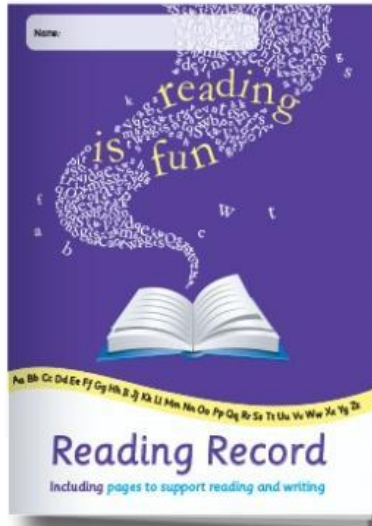
White polo shirt or blouse
Grey skirt or trousers
Navy blue jumper – Lathom logo
Black shoes
White t-shirt (PE)
Black shorts or jogging pants (PE)
Trainers (PE)



Boys School Uniform:

White polo shirt or shirt
Grey trousers
Navy blue jumper – Lathom logo
Black shoes
White t-shirt (PE)
Black shorts or jogging pants (PE)
Trainers (PE)

Reading Records



Date, book and the page you read to	Comments Give a score out of 10 to show how much you enjoyed your reading
27/09/20 Hidden Figures Margot Lee Shatterley Chapter 3	The four women which who were mathematicians working they were helping to make the planes more advanced than the Germans. 10/10
	10/10

- Children read a chapter book each night, for a minimum of 20 minutes.
- They record the date, book title and the page numbers they read in the first box of their reading record book. In the second box they write one summary sentence about the section of the book they have just read.
- The reading record book must come to school everyday and go home every night.
- If a child has not read/brought in their reading record for 2 days or more we will contact you on a Friday to let you know and ascertain the reasons for this.

Homework

- Homework will be given by the set teacher
- Children should have logins for TT rock stars, Mymaths, LbQ, Spelling Shed. They should be using these everyday. We are currently setting these up and they should be in place within the next couple of weeks.
- Please encourage your children to complete their homework.

Guided Reading

Year 6

Lathom's Reading Vision



Letters from a
Lighthouse by Emma
Carrol

Skellig by David
Almond

The Hobbit by JR
Tolkien

Holes by Louis Sachar

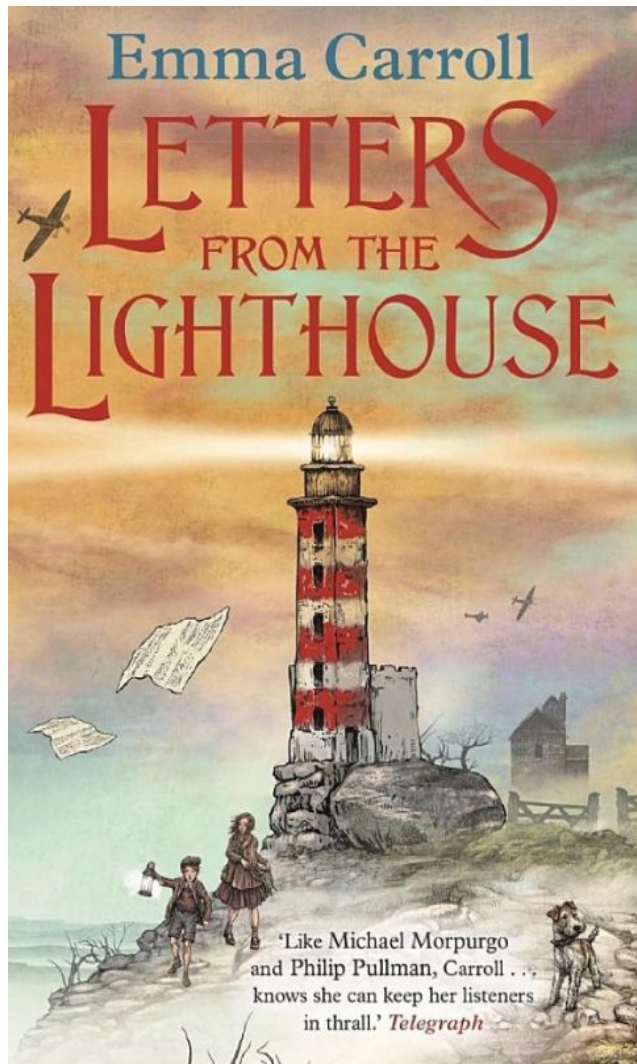
At Lathom, we follow a whole text reading approach for Guided Reading.

Each lesson focuses on developing their reading fluency and comprehension skills.

The Borrowers by
Mary Norton

Blackberry Blue by
Jamila Gavin

Writing & Grammar



Our core text for Writing in Autumn 1 is '**Letters from the Lighthouse**' by Emma Carroll.

- Children will be writing a range of fiction and non-fiction this term including a recount letter and a balanced argument.
- Children will explore the text and characters through drama, role play, hot seating, guest speakers, immersive workshops and extended writing.
- Children will study grammar in depth which includes subordinate clauses, embedded clauses and a range of cohesive devices.
- Children will be given vocabulary books to take home. They will use these to gather vocabulary from the books that they take home to read. They can then use these in their writing.

Writing journals



Mathematics

This term we will be teaching these areas of mathematics:

- **Place Value**
- **Number operations: addition, subtraction, multiplication and division.**

We follow a mastery approach in Maths to help increase confidence among our children and improve fluency in Maths.

This term, children are encouraged to practise their times tables using the program, Times Tables Rock Stars. This will include competitions.

Science

- This term in Science, children will explore the topic 'Living things and their habitats'.
- We will explore how we can classify animals according to their physical characteristics.

History

This half term, children will learn about World War Two: Battle of Britain. We will explore the factors that contributed to World War Two (WW2). Then, they will research the role of different countries during WW2 and understand the use of propaganda at that time. Children will also research a line of enquiry linked to WW2. Data will be used to ask and answer historical questions.



RE - Religious Education

The Big Question we are studying this half-term in RE is:

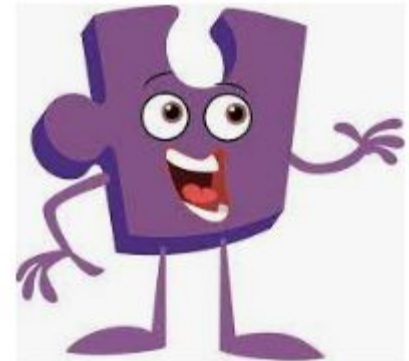
How important are the similarities and differences between and within religions and worldviews?

Children will identify the similarities and differences that religions and worldviews share. They will conduct research on six world religions.

We will do a visit to a Buddhist temple.

PSHCE

In PSHCE, children will explore the topic, 'Being me in My World'. They will identify their goals for the year and understand and express their fears and worries for the future. In addition, they will recognise that there are universal rights for all children but for some children, these rights are not met. They will also discuss the impact of their actions on people locally and globally.



Computing

Children will take the role of a technician when studying computing systems and networks. They will explore how data is transferred over the internet. The focus will first be on addressing then they will examine the make up and structure of data packets.

Children will discuss the role of the internet in facilitating Online communication and collaboration and evaluate various forms of communication.



PE

This term we will be teaching invasion games and basketball.

Each class will have one P.E. session weekly.

Ash - Wednesday

Birch - Friday

Alder - Thursday

Beech - Friday

Aspen - Wednesday

Assessment week

- Assessment weeks
 - . September
 - . December
 - . March
- Checks where your child currently is
- Ensures that we can support children to achieve their full potential.
- Identifies gaps in learning

SETS

- In Year 6, children are set for reading and maths. They are also put into groups for writing.
- Children will be grouped with other children who have similar needs to them. This ensures we can tailor learning to the specific needs of the children.
- Some sets will have a small number of children.
- We carefully consider the sets and also consider factors such as behaviour
- Sets are fluid so children move around throughout the year.

Interventions

- Some children will be taking part in interventions for reading, writing or maths. This will help support these children to achieve their full potential. They will change throughout the year to accommodate the needs of pupils.

Date for your diary - SATs week

- Week beginning 13th May 2024
- Please ensure that no appointments are booked for this week
- We will hold a meeting with more information closer to the time.

Children walking home alone

- We allow children to walk home alone in Year 6
- In order for your child to walk home alone please write on a paper and sign at the bottom:

My name is _____. I give permission for my child
_____ in class _____ to walk home alone.

Fundraising

- PTA meeting next Tuesday 19th September 2pm in school and also on zoom on Wednesday 20th September at 5pm.
- Please come and help strengthen our school community and raise money for the school.
- Residential

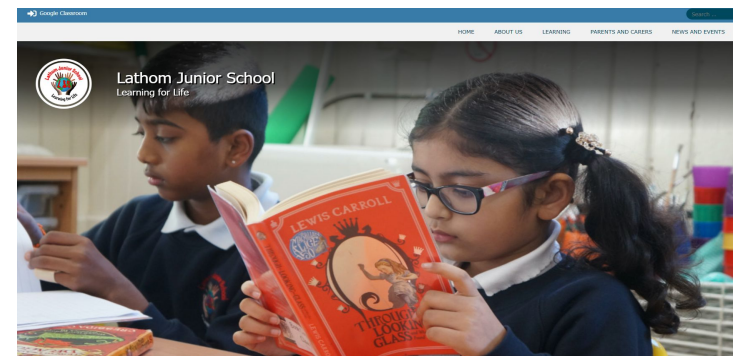
Communication with parents and carers

At Lathom we have an 'open door policy' – at the start and at the end of the day there will be an opportunity to speak to Lathom staff in the playground about any queries you may have.

You may speak to the class teacher at the end of the school day, once children have been dismissed.

You will have an opportunity to discuss your child's progress during Parents' Evenings.

We use parentmail and the school's website to communicate with you during the year.



Complaints procedure

If you have a worry or issue please speak to your class teacher in the first instance.

If the issue cannot be resolved, the Year Group Leader and Assistant Head-teacher will meet with parents and carers to support the resolution of the issue.

The school's complaints procedure is available to all parents and carers in the school office.

Attendance, absence and medication

Please ensure your child attends school everyday even if they have a slight cold. If your child has a high temperature, is vomiting or has a medical appointment, please phone the school office to let staff know your child will not be in school. Attendance is carefully monitored at school.

Medication for children (e.g. asthma pump) is kept in the school office so that children can access it at playtime and when going on educational visits.

Any Questions

