

**Welcome Parents**

**Parents' Information Day**

# Year 6 Team

**Assistant Head** – Mrs L. Wenborne (supported by Mrs Musinguzi)

**Year Group Leader** – Miss F.Rouf

Willow - Mr Lee

Yew - Mrs Ahmed

Poplar - Mrs Pillay

Rowan - Miss Ibrahim

Spindle - Mrs Rouf

## **Staff supporting sets:**

Mrs A. Ganesh

Mrs. N. Mohammed(Mrs Naseem

# School Day

**8.00**

Breakfast Club

**8.30-8.45**

Gates Open, children can start school between this time. I encourage children to come in at 8:30 if possible.

**8.30-8.45**

Early Morning Work

**8.45**

Registration is taken and lessons begin

# Our commitment



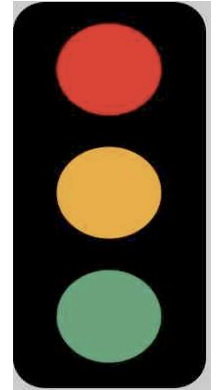
# Behaviour

We have high expectations of our children in and outside of school.

- To listen carefully and engage in learning
- To walk sensibly and quietly around the school
- To speak respectfully to each other
- We expect all children to try their best and attempt tasks independently before asking for help
- To always respect school property and others around the school
- Toilets

# Behaviour in Class

**We have high expectations for behaviour at all times. We currently use a traffic light system that encourages children to make positive choices and demonstrate positive behaviour in class.**



- At the start of the day, each child begins on green.
- If a child misbehaves or breaks one of the classroom rules, they receive a verbal warning. If this the behaviour is repeated again, the child is now moved to amber. Another verbal warning is given, reminding them of our values and their conduct in class.
- If the child fails to make a positive choice about their behaviour, they are moved to red. They will then need to visit the reflection room at lunchtime, where a sheet is filled out with the learning mentors who will discuss their behaviour with them and provide support and reflection time.

# Our School Values

Children will learn about, discuss and reflect on our school values during assemblies and as part of Learning at Lathom.

The school values are the 'attributes' we want to develop in all children at our school so that they become responsible and caring citizens of the future.



# School Uniform

Lathom Junior School has a school uniform for both the classroom and PE. All children are expected to wear school uniform to school each day. All items of clothing should be labelled with your child's name.

## Girls School Uniform:

White polo shirt or blouse  
Grey skirt or trousers  
Navy blue jumper – Lathom logo  
Black shoes  
White t-shirt (PE)  
Black shorts or jogging pants (PE)  
Trainers (PE)



## Boys School Uniform:

White polo shirt or shirt  
Grey trousers  
Navy blue jumper – Lathom logo  
Black shoes  
White t-shirt (PE)  
Black shorts or jogging pants (PE)  
Trainers (PE)



What should/shouldn't my child bring to school..

- Children must not bring any toys/objects to school. The school does not accept responsibility for any items lost.
- Small bag - P.E kit, reading book and water bottle.

# Reading Records

- Children read a chapter book each night, for a minimum of 20 minutes.
- Turning digital - watch this space.

# Homework

- Homework will be given by the set teacher
- Children should already have logins for TT rock stars, Spelling Shed and Bug Club. Mymaths and LbQ will be given out when children start sets. They should be using these everyday.
- Please encourage your children to complete their homework. Homework is tailored to the needs/gaps of your children.

# Guided Reading

Year 6

## Lathom's Reading Vision



At Lathom, we follow a whole text reading approach for Guided Reading.

Each lesson focuses on developing their reading fluency and comprehension skills.

---

Letters from a Lighthouse by Emma Carroll

---

Skellig by David Almond

---

The Hobbit by JR Tolkien

---

Holes by Louis Sachar

---

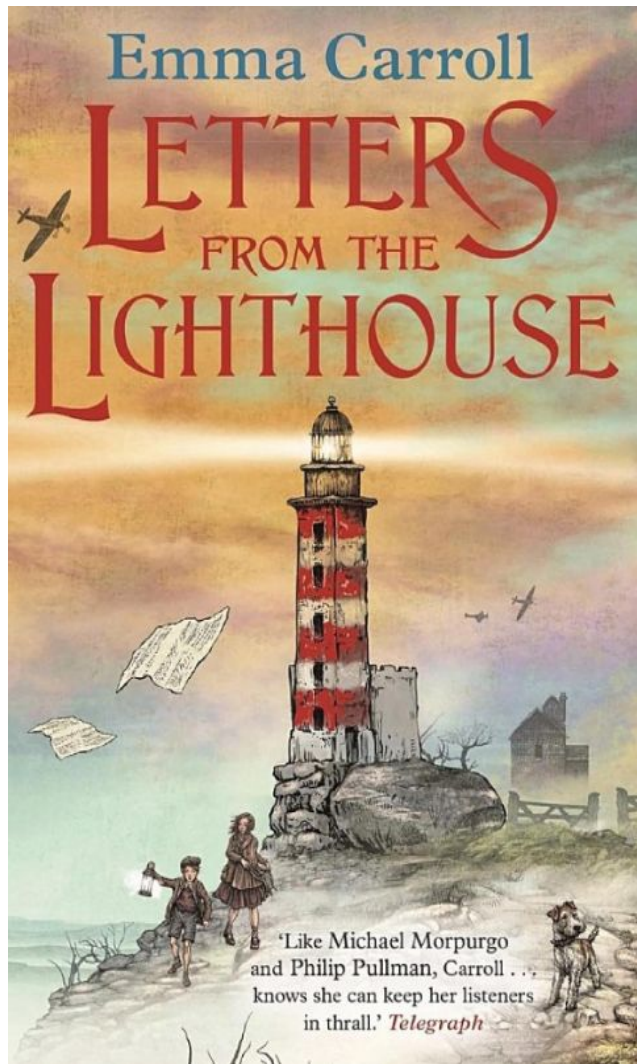
---

The Borrowers by Mary Norton

---

Blackberry Blue by Jamila Gavin

# Writing & Grammar



Our core text for Writing in Autumn 1 is '**Letters from the Lighthouse**' by Emma Carroll.

- Children will be writing a range of fiction and non-fiction this term including a recount letter and a balanced argument.
- Children will explore the text and characters through drama, role play, hot seating, guest speakers, immersive workshops and extended writing.
- Children will study grammar in depth which includes subordinate clauses, embedded clauses and a range of cohesive devices.
- Children will be given vocabulary books to take home. They will use these to gather vocabulary from the books that they take home to read. They can then use these in their writing.

# Writing journals



# Mathematics

This term we will be teaching these areas of mathematics:

- **Place Value**
- **Number operations: addition, subtraction, multiplication and division.**

This term, children are encouraged to practise their times tables using the program, Times Tables Rock Stars. This will include competitions.

We follow a mastery approach in Maths to help increase confidence among our children and improve fluency in Maths.

# Science

- This term in Science, children will explore the topic 'Evolution'.
- We will explore how we can classify animals according to their physical characteristics.



# History

This half term, children will learn about World War Two: Battle of Britain. We will explore the factors that contributed to World War Two (WW2). Then, they will research the role of different countries during WW2 and understand the use of propaganda at that time. Children will also research a line of enquiry linked to WW2. Data will be used to ask and answer historical questions.



# RE - Religious Education

The Big Question we are studying this half-term in RE is:

**How important are the similarities and differences between and within religions and worldviews?**

Children will identify the similarities and differences that religions and worldviews share. They will conduct research on six world religions.

We will do a visit to a Buddhist temple.

# PSHCE

In PSHCE, children will explore the topic, 'Being me in My World'. They will identify their goals for the year and understand and express their fears and worries for the future. In addition, they will recognise that there are universal rights for all children but for some children, these rights are not met. They will also discuss the impact of their actions on people locally and globally.

# Computing

Children will take the role of a technician when studying computing systems and networks.

Children will discuss the role of the internet in facilitating Online communication and collaboration and evaluate various forms of communication.



# Assessment week

- Assessment weeks
  - . Last week
  - . Week beginning 2nd December
  - . Week beginning 17th March
- Checks where your child currently is
- Ensures that we can support children to achieve their full potential.
- Identifies gaps in learning

# SETS

- In Year 6, children are set for reading and maths. They are also put into groups for writing.
- Children will be grouped with other children who have similar needs to them. This ensures we can tailor learning to the specific needs of the children.
- Some sets will have a small number of children.
- We carefully consider the sets and also consider factors such as behaviour
- Sets are fluid so children move around throughout the year.

# Interventions

- Some children will be taking part in interventions for reading, writing or maths. This will help support these children to achieve their full potential. They will change throughout the year to accommodate the needs of pupils.

# Date for your diary - parents' evening

## Thursday 26th September

This is an important parent's evening as we will be sharing important information with you such as how your child has performed in their baseline Year 6 tests, what they need to work on and how you can support them throughout the year.

All day until 6pm. 10 minute appointments. Please select a timeframe for your appointment using the Google form (check emails). We will then confirm the time with you.



# **Date for your diary - SATs week**

- Week beginning 12th May 2025
- Please ensure that no appointments are booked for this week
- We will hold a meeting with more information closer to the time.

# Date for your diary - school trips

- Sept 16 - Imperial War Museum (x3 classes) Poplar, Spindle, Yew
- Sept 17 - Imperial War Museum (x2 classes) Willow, Rowan
- Sept 20 - Natural History Museum x5 classes - All classes
- October 8th - National Portrait Gallery: Migration Stories (Poplar and Willow)
- October 15th - National Portrait Gallery: Migration Stories (Yew and Spindle)
- November 5th - National Portrait Gallery: Migration Stories (Rowan)
- November 12th - East London Buddhist Cultural Centre (Willow and Rowan)
- November 14th - East London Buddhist Cultural Centre (Yew, Spindle and Poplar)

Parent helpers please!

# Children walking home alone

- We allow children to walk home alone in Year 6
- In order for your child to walk home alone please write on a paper and sign at the bottom:

My name is \_\_\_\_\_ . I give permission for my child  
\_\_\_\_\_ in class \_\_\_\_\_ to walk home alone.

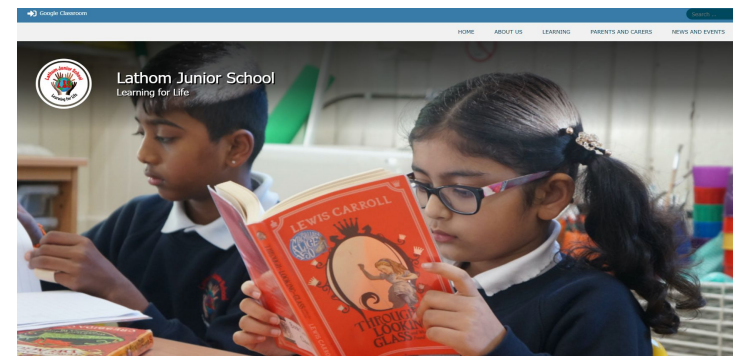
# Communication with parents and carers

At Lathom we have an 'open door policy' – at the start and at the end of the day there will be an opportunity to speak to Lathom staff in the playground about any queries you may have.

You may speak to the class teacher at the end of the school day, once children have been dismissed.

You will have an opportunity to discuss your child's progress during Parents' Evenings.

We use school gateway and the school's website to communicate with you during the year.



# Complaints procedure

If you have a worry or issue please speak to your class teacher in the first instance.

If the issue cannot be resolved, the Year Group Leader and Assistant Head-teacher will meet with parents and carers to support the resolution of the issue.

The school's complaints procedure is available to all parents and carers in the school office.

# **Attendance, absence and medication**

Please ensure your child attends school everyday even if they have a slight cold. If your child has a high temperature, is vomiting or has a medical appointment, please phone the school office to let staff know your child will not be in school. Attendance is carefully monitored at school.

Medication for children (e.g. asthma pump) is kept in the school office so that children can access it at playtime and when going on educational visits.

## Lathom PTA (Parent Teacher Organisation)

We have an active and enthusiastic PTA team which began in September last year.

### Aims of the PTA

- Support the school to help provide a wider and richer experience for pupils.
- To help to develop the school community by organising activities.
- To help raise money for the school to support extra-curricular activities, equipment and events.



Some of our events last year.  
We hope to do even more this year.  
We also bought playground equipment and  
collected over 500 books for the  
classroom.



## Easy fundraising



Please sign up for Easyfundraising and download the Easyfundraising app. Every time you spend money on certain websites, the school will be given a small percentage of this. This doesn't cost you anything.

## How can you get involved?

All of you are automatically members of the PTA as you are a parent/carer at the school. Come along to events or get involved in helping out!

Be a member of our committee - the committee are the core group who plan and organise events. There have space for 12 members on the committee. Last year we only had 8 volunteer so we are always looking for more!

We will be holding our annual meeting in a couple of weeks. Look out for the date.

Please sign up now at the sign-up sheet at the back of the hall or email: [lathompta@alfederation.com](mailto:lathompta@alfederation.com) (feel free to take a pic of this email address)

# INTRODUCING CASHPOT FOR SCHOOLS

Download and opt-in with Asda Rewards  
and we will donate **££s** to schools.

**CASHPOT  
FOR  
SCHOOLS**



## HERE'S HOW

- 1 Download the Asda Rewards app & sign up today
- 2 Opt-in to Cashpot for Schools and follow the steps in your app
- 3 Shop, scan and we donate



With  
**Parentkind**



Selected stores. Minimum spend £2+. Exclusions apply including Asda Express & George.com. Subject to availability. UK 18+. App & Opt in required. 0.5% of the value of a customer's eligible shop is donated. Publicly funded primary schools, must register with Parentkind charity 1072833. Full T&Cs at [asda.com/cashpotforschools](https://asda.com/cashpotforschools). Rewards T&Cs at [asda.com/rewards/terms](https://asda.com/rewards/terms). Ends 30/11/24

- The first time you shop, £5 will be donated. £1 will then be donated for the next 3 shops.
- Everytime you shop, if you scan the barcode on the rewards app (found in the 'wallet tab' then a percentage of the money will be donated to the school.

# Any Questions

